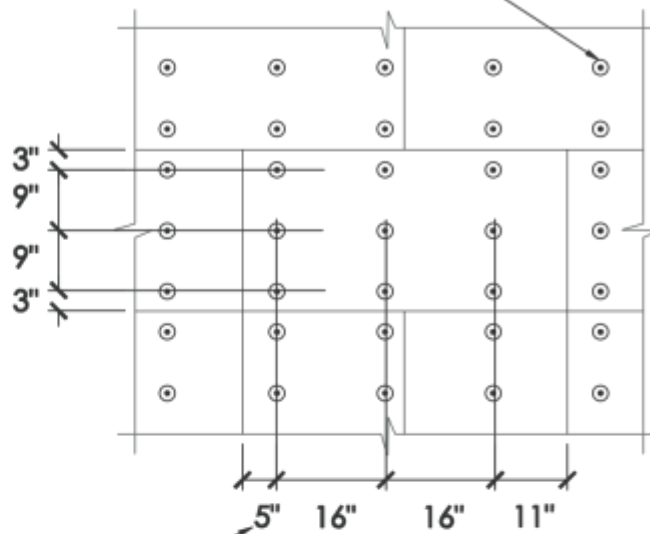


Typical Fastener Pattern

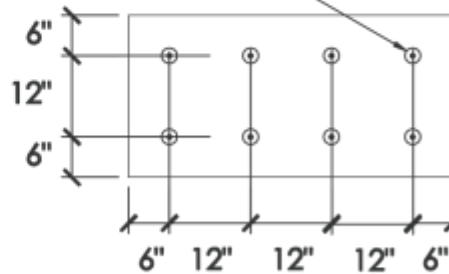
WM 1.3

Mechanical attachment of insulation board to wood or steel studs spaced maximum 16" O.C. See note No.1 below



See note No.2 below

Mechanical attachment of insulation board to structural substrates and screwable sheathing. See note No. 1 below



NOTE 1: The above fastener spacing pattern shall be provided as a minimum, faster type. Spacing and depth of the penetration shall be determined by the design professional to meet specific job requirements.

NOTE 2: Distance from fastener to edge of EPS is variable, but shall not be greater than 11" nor less than 5".